

Visit us at www.seabrookclassics.com

Dealer Catalog



by Coastal  Woodcraft

Introduction	2,3
Ordering and Shipping	4,5
Shipping Policy	6
About our Furniture	7
Furniture Finishing Standards	7
Warranty	8
Stocking Dealer Program	9
CAD Drawings	10
Cancellations	10
Warranty and Repair Policy Statement	11
CAD Drawing Example	12
Door Options	14
Monogramming	15
Finishes	16
Standard Colors—Page 1 of 2	17
Standard Colors—Page 2 of 2	18
Level II Finishes	19
Level III Finishes	20
Stain Grade Finishes	21
Wood and Cottage Style Furniture Notes	22
Furniture Sections		
Price List—Appendix A		



www.seabrookclassics.com

www.coastalwoodcraft.com

Phone: 843.466.0241 Fax: 843.466.0288

By Coastal  Woodcraft

The Lowcountry...

Growing up in the Midwest has its ups and downs; the long cold winters, short hot summers, miles and miles of corn and wheat fields, and the occasional vacation to see family in North Dakota. The beach and the ocean breeze was something experienced watching Flipper and Gilligan's Island. Once out of college I had the chance to visit the coast of South Carolina and Georgia and was hooked from that day forward. Now twenty years later, my children live a life I only dreamed of as a child. The beach, the trees, the ocean all just minutes away and yes, the occasional 'Flipper' passes by the dock.



The place we live is known as the Lowcountry. Islands here are not like Gilligan's Island but rather, they are areas of land just a few feet above sea level covered with ancient angel oak trees dripping with Spanish moss, Palmetto palm trees, and lush green underbrush. They're separated by vast saltwater marshes with winding rivers and tidal creeks teeming with wildlife. The mood here is laid back and moves at a more comfortable pace. The air is heavy and smells of salt. Just past the marshes and the barrier islands are the ocean and all its mysteries. The Lowcountry is not just a description of land, it also describes a state of mind. It's relaxing, tranquil, and a place we call home.



In my 20th year in the Lowcountry, I still notice the palm trees and the Spanish moss, and still appreciate the marshes and stunning beauty that surrounds me. It is this life and this area that inspires our furniture designs.

When you place a piece of Seabrook Classics furniture in your home, you get a small piece of the Lowcountry too. The subtle, simple design characteristics fit the most formal rooms and the informal rooms as well. Maybe its just an accent piece, a buffet or armoire, or an entire bedroom suit you choose. Whatever it may be, we know when you look at it you'll be reminded of the Lowcountry. Peace, tranquility, a comfortable pace, and a more comfortable place.

This catalog is a representation of what we have to offer. You can view additional furniture and paint colors at our website:

www.seabrookclassics.com.



www.seabrookclassics.com
www.coastalwoodcraft.com

Phone: 843.466.0241 Fax: 843.466.0288

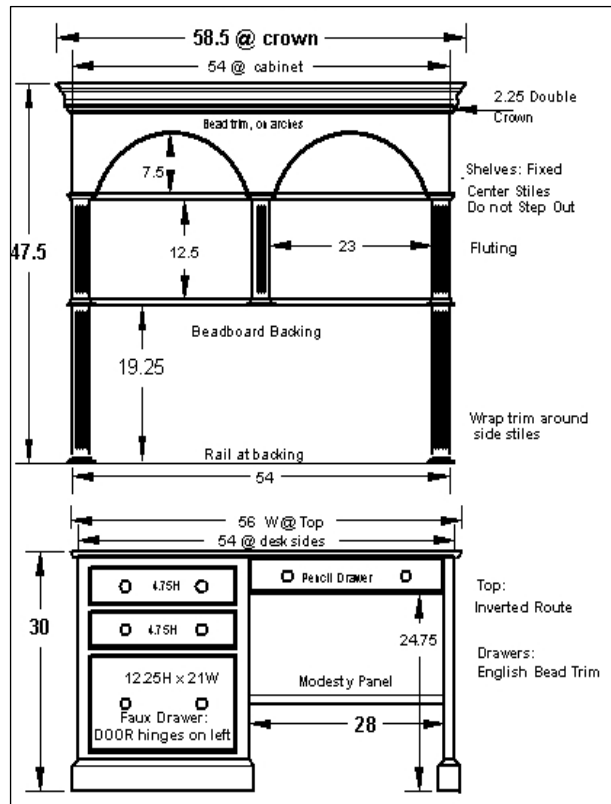
By **Coastal**  **Woodcraft**

Construction and Customization...

We use the bench method of construction. This means that each piece of furniture we produce is built individually by a skilled craftsman from start to finish. This allows us to customize each piece to the specific desires of the customer. From a simple modification of one of our existing designs to a complete custom piece with included CAD renderings, we strive to meet your every need.



Head Carpenter David Pickel



Finishes...

Our painted finishes feature over 30 colors which can be combined creating a "rubbed finish", bringing multiple colors into one piece. Our stain finishes range from a whitewashed finish to our classic Sealed English finish. Our painted pieces are constructed of Poplar and Birch. Our stain grade items feature White Pine, a warm wood found in the Lowcountry. We also offer many of our designs in premium hardwoods from Maple, Cherry, and antique Heart Pine.



Head Painter Dan Rush



www.seabrookclassics.com
www.coastalwoodcraft.com

Phone: 843.466.0241 Fax: 843.466.0288

By **Coastal Woodcraft**

Ordering and Shipping

Orders

To receive wholesale pricing, you must furnish us with a copy of your resale business license. *There is no minimum order quantity.* We offer a Stocking Dealer program for customers who wish to stock our furniture in showrooms. Please refer to the Stocking Dealer Program in this catalog.

Terms

- We accept Visa, MasterCard, and checks.
- We require a 50% down payment at the time of order. We do not take 100% deposits. Our standard lead time is 8 – 10 weeks, with an additional 5 – 15 day ship time.
- Orders go to production upon receipt of a confirmed and signed job order and 50% payment is received. This is when we begin our lead time schedule.
- We will contact you when your order is being packed for shipping for the balance due. Upon receipt of the balance due, we will ship your order.

RUSH Lead Times

We offer a "RUSH Lead Time" program. RUSH lead times are for 6 weeks or less, and we *guarantee* our RUSH Lead Times. For your order to be rushed, there is a 10% fee added to the total order amount, and the RUSH fee is collected up front. If we do not have your order ready for shipment on the date we guarantee, we will refund your RUSH Fee.

Example of RUSH Lead Time and Refund

Order total = \$1,000 and received on signed and confirmed on August 1st, and a 4 week lead time is requested. Total cost of order for a 4 week lead time is \$1,100. (Total plus 10%)

We quote a ship date of August 28th. We collect a 50% deposit, plus 10% RUSH fee up front. Total paid up front will be \$600 with a balance due on August 28th of \$500 when your furniture order is ready to ship.

If we do not make your RUSH ship date, and the furniture is not ready until August 29th, your RUSH fee is waived, and your balance due is now \$400.

****PLEASE NOTE:** We can not guarantee the date your order will leave our docks with the shipper; we can only guarantee what is in our control. Please add 5-15 days for delivery.

If we are one day late on your ship date, you get a RUSH fee refund – no questions asked.



www.seabrookclassics.com
www.coastalwoodcraft.com

Phone: 843.466.0241 Fax: 843.466.0288

By Coastal  Woodcraft

Shipping

Through our many years of experience with shipping furniture, we choose to work exclusively with Metropolitan. Metropolitan demonstrates a commitment to excellence in customer service, and provides a wide range of shipping options from simple dock delivery to "White Glove" delivery at competitive industry rates.. All of our shipping quotes are through Metropolitan and our other preferred shippers. Should you have your own shipping preference, quotes and shipping arrangements must be handled through your carrier.

METROPOLITAN WAREHOUSE & DELIVERY

"Since 1989, Metropolitan Warehouse & Delivery has succeeded in becoming the Premier White Glove, In-Home Delivery Company, specifically catering to the High End Furniture, Antiques, and Fine Furniture Manufacturing Industries. With humble beginnings, Metropolitan began with 5 employees and 1 truck. Today, we are a team of 70+ employees, 22 trucks, in three prime locations; Linden New Jersey, High Point North Carolina, and Miramar Florida. Metropolitan Warehouse is proud of our experienced, dedicated, and professional staff and takes pride in the relationships we have built with our loyal Clients, Designer Showrooms, Businesses, and Interior Designers. Understanding, meeting, and exceeding your professional expectations is our # 1 goal. We look forward to getting to know you and thank you in advance for the opportunity to serve your delivery needs with the quality, integrity, and special care that we at Metropolitan so sincerely offer. "

New Jersey	Florida	North Carolina
2565 Brunswick Ave. Building J, Linden NJ 07036 Phone: 800.300.7417 Fax: 866.218.8129	3949 Commerce Pkwy Miramar, FL 33025 Phone: 800.300.7417 Fax: 954.392.4987	1821 Baker Road High Point, NC 27263 Phone: 800.300.7417 Fax: 336.434.4110



www.seabrookclassics.com
www.coastalwoodcraft.com

Phone: 843.466.0241 Fax: 843.466.0288

By Coastal  Woodcraft

Shipping Policy

Please review these instructions carefully and forward to your clients as needed.

Definitions...

- Lead Time: - time it takes for your furniture to be completed, boxed, and ready for shipping
- begins on the date we have received 50% down payment and signed/
confirmed order and ends when merchandise is ready for carrier pick up.
- Ship Date - date your order will be completed, boxed and ready for pick up by our carrier.
- Delivery - merchandise arrives at its final destination.
- Ship time - time it takes to go from our facility to its final destination, typically 5 to 15 days
- Bill of Lading - List of items shipped, "shipped from" address and "shipped to" address, and
acknowledgement signature of receipt of merchandise in good condition.

When your order is received

- All merchandise must be opened and inspected for damage at the time of delivery and *prior to signing the Bill of Lading.*
- If you are unable to inspect your order at the time of delivery, please write on the Bill of Lading "Subject to Inspection" above your signature.

**If you sign the Bill of Lading without inspecting or noting "Subject to Inspection" you are accepting the delivery and signing that it is being received in good condition. In this case, any damage - including concealed damage - is your responsibility to claim with the shipping company.

If the merchandise is:

- Damaged – regardless of how it occurred
- Not what you ordered
- Incorrect in any way

*Refuse the delivery and contact us immediately -
It will be returned to us for repair and/or replacement.*

- If you have the ability to have the furniture repaired locally please accept the furniture noting the damage on the Bill of Lading and contact us immediately for further instructions.
- If delivery is refused, note the damage on the Bill of Lading and Coastal Woodcraft, LLC will handle all claims with the carrier and will re-ship as soon as possible.
- If damaged merchandise is accepted or the received merchandise is incorrect and is accepted, it will be your responsibility to manage all claims or have the item shipped to Coastal Woodcraft for repair or replacement. Charges may apply.



www.seabrookclassics.com
www.coastalwoodcraft.com

Phone: 843.466.0241 Fax: 843.466.0288

By Coastal  Woodcraft

About Our Furniture

Seabrook Classics furniture is built to exacting standards by individual craftsmen. Many of our finishes are ordered "distressed" or "rubbed" as the cottage style of furniture is intended to appear older and worn in many cases. Over the years, your furniture will become distressed and gain its own character.

Furniture Finishing Standards

Coastal Woodcraft finishes are all waterborne. We do offer eco-friendly finishes. Please specify eco-friendly paints when ordering. Eco-friendly products require a separate quote.

We utilize 4 finish levels in our finishing process:

A. Furniture Faultless - our best finish with all holes filled and no imperfections noticeable – used on all of our pieces on at least 3 sides and all interiors

B. Furniture Limited - finished well, but some slight faults may be noticed upon close inspection – used primarily on the backs of headboards and footboards where close inspection is not normal

C. Rough Finished – generally sprayed with the color of the piece – used primarily on the backs of items which are made to be placed against a wall such as a nightstand or entertainment center.

D. Unfinished – raw wood

All furniture is finished "Furniture Faultless" on 3 sides, and the back is "Rough Finished" unless a different finish level is specifically requested at the time an order or contract is signed.

**You may request specific finish levels for a particular item if you know it is going to be in a setting where all 4 sides will be exposed. For example, if you order a nightstand, you may specify that it be furniture faultless on all 4 sides instead of the standard 3 (there will be a slight up-charge for this).

Hinges

Our standard finishing process produces painted hinges. They are painted the same color the piece is painted. It is usual and customary that the paint on the hinges may crack and flake off as the piece ages. If you desire hinges that are not painted, please note this in your order. There is an additional fee of \$5 per hinge if you choose to not have them painted. Bare hinges are dark brown in color. If you desire designer hinges, each order will require an individual quote.



www.seabrookclassics.com

www.coastalwoodcraft.com

Phone: 843.466.0241 Fax: 843.466.0288

By Coastal  Woodcraft

Warranty and Care

Seabrook Classics furniture is manufactured with constant quality control inspections. Changes in atmospheric conditions can affect wood products. Extreme changes in humidity may cause warping, cracks, and splits. Uneven surfaces can cause doors to become out of square and sag.

The warranty expressed and implied is limited to one year against defects in workmanship and material. Furniture damaged in shipping is not included in the warranty. Please refer to our shipping policy with regard to shipping damages.

The warranty does not apply to damage that may result from neglect, accidental or intentional damage (after production distressing), exposure to extremes in temperature and humidity and alteration or abuse of the product.

Furniture ordered **unfinished** does not come with a warranty and Coastal Woodcraft is not responsible for **custom paint finishes**.

Should your furniture become damaged as a result of workmanship or materials, please supply a detailed description and digital photographs. Claims must be made by the dealer. Once damage is determined to be workmanship or material in nature, Coastal Woodcraft will make the repair or replacement or approve a local vendor to do so. We must authorize this in writing prior to commencement of repair by a local vendor. Coastal Woodcraft will not reimburse unauthorized repair costs under any circumstances. Coastal Woodcraft does not warranty local vendor work completed.

Care and Finish

Painted Finish – Clean with slightly damp cloth only – Wipe dry.

Stained Finish – Clean with slightly damp cloth only. Wipe dry.

Stained Finishes

No two trees are exactly alike and each cut of wood will take stain differently. Variations between samples and finished goods should be anticipated. This is due to aging of the samples and cuts of wood in the finished product. Unless otherwise specified in the order, stained wood, wood table tops, and heart pine accented pieces will have visible knots. **If you do not desire visible knots in the finished product – this must be noted at the time of order and may require additional charges.**

SEE STATEMENT OF WARRANTY AND LIMITS FOR REPAIRS ON PAGE 11.



www.seabrookclassics.com

www.coastalwoodcraft.com

Phone: 843.466.0241 Fax: 843.466.0288

By Coastal  Woodcraft

Stocking Dealer Program

While there is no minimum order in purchasing, some decorators and dealers may choose to become a part of our "Stocking Dealer" program. This program has many benefits:

Stocking Dealer Prices

Significantly lower than our standard wholesale pricing.

Referrals

Coastal Woodcraft does not sell directly to the public. We rely on our dealers and decorators to sell and promote our furniture locally. However, we have a national advertising campaign that is dedicated to directing interested consumers to our stocking dealers. We have an active referral program in place, including the "dealer locator" on our website www.seabrookclassics.com. General inquires to our facility are referred to the nearest stocking dealer.

Requirements to become a Stocking Dealer

- Stocking Dealers must complete the Seabrook Classics Dealer application and be approved by Coastal Woodcraft, LLC as a Stocking Dealer.
- There is an opening order minimum of \$5,000 (at stocking dealer prices) and Stocking Dealers are required to purchase an annual volume of \$15,000 (at stocking dealer prices) to remain a Stocking Dealer.
- Stocking Dealers must maintain a showroom inventory minimum of \$5000 (at stocking dealer prices) of Seabrook Classics product at all times.
- Stocking Dealers must dedicate the appropriate amount of showroom space to our product to allow it to show well. We recommend at least 200 square feet. This will allow the consumer to get a sense of the quality of our construction and our materials, as well as the overall look of the line.

Out of fairness to our current Stocking Dealers, we cannot offer stocking dealer prices unless you meet all requirements.



Framed Dealer Color Board

Color boards available for \$75. Each board is monogrammed with the lettering of your choice in our 4 most popular monogram fonts. Each color chip measures 2.5"W x 2.0"H.

Stocking Dealers are given a complimentary monogrammed color board with their opening order. (beginning April, 2011)



www.seabrookclassics.com

www.coastalwoodcraft.com

Phone: 843.466.0241 Fax: 843.466.0288

By Coastal  Woodcraft

CAD Drawings and Fees

CAD drawings are provided on all custom pieces. A CAD drawing fee for each piece will be assessed a \$50.00 fee which will be added to the total order amount. This fee includes the initial drawing and all subsequent changes for approval. CAD fees are non refundable. All drawings remain the property of Coastal Woodcraft, LLC.

Once a final approval is provided by the customer, any changes to the final approved order *after the piece is placed into production* will be assessed an additional \$50.00 fee. Custom pieces will not be placed into production and lead times can not be quoted until a final approval signature is received on the final CAD drawing.

See CAD example on Page 12.

CANCELLATION POLICY

WE DO NOT CARRY ANY ITEMS IN STOCK – ALL ITEMS ARE BUILT TO ORDER

Cancellation of orders must be submitted in writing

Orders canceled within 2 weeks of the order date will receive a full refund.

Orders canceled within 2-6 weeks of the order date will have a penalty of 25% of the order total. The penalty amount will be held as a credit on your Seabrook Account for 90 days for use on a future order. After this time the penalty amount will be forfeited. Orders canceled after 6 weeks of the order date OR orders not accepted and paid in full within 90 days of completion will be forfeited and the 50% deposit lost. Refunds will be processed within 2-3 weeks of the request.



www.seabrookclassics.com

www.coastalwoodcraft.com

Phone: 843.466.0241 Fax: 843.466.0288

By Coastal  Woodcraft

Warranty Statement and Repair Policy

As a natural product, wood furniture will, from time to time, crack and warp due to changes in climate, humidity, and temperature. We make all attempts to manufacture our furniture with this in mind, but by its very nature, solid wood furniture can be unpredictable. All furniture is inspected prior to leaving our plant, and we ensure all doors are straight, drawers glide smoothly and fit snugly, and joinery is sound. We stand by our products and offer the following as a statement of warranty and repair policy.

Door warping within 12 months of delivery. The owner of the furniture is authorized to remove the door(s) and ship to us. We will rebuild the doors, paint, and return, with return shipping to the owner paid by Coastal Woodcraft, LLC. Labor for installation allowance is \$25 per door. Please note, if one door is warping, both doors must be removed and sent.

Door warping beyond 12 months from delivery. The owner is authorized to remove the doors. Coastal Woodcraft, LLC will rebuild the doors and paint at no cost to the owner. Shipping and installation is the responsibility of the owner.

Repairs to cabinet cases or accent furniture. Repairs to cabinets or accent furniture must have an estimate generated and sent to Coastal Woodcraft, LLC, prior to work commencement. Coastal Woodcraft, LLC will review the estimate, and provide reasonable approval in writing. Once repair work is completed, Coastal Woodcraft, LLC will pay the contractor invoice, or reimburse the owner upon receipt of a paid invoice for the repair work paid by the owner to the contractor that provided the estimate.

Paint for repair work. Coastal Woodcraft, LLC will provide 6 ounces of paint at no cost to the owner. However, due to onsite condition variability, (i.e. aging, sun bleaching, etc.) we cannot guarantee a perfect match.

****Repair work completed without written estimate from the contractor and written approval for work commencement from Coastal Woodcraft, LLC will not be reimbursed under any circumstances.**



www.seabrookclassics.com

www.coastalwoodcraft.com

Phone: 843.466.0241 Fax: 843.466.0288

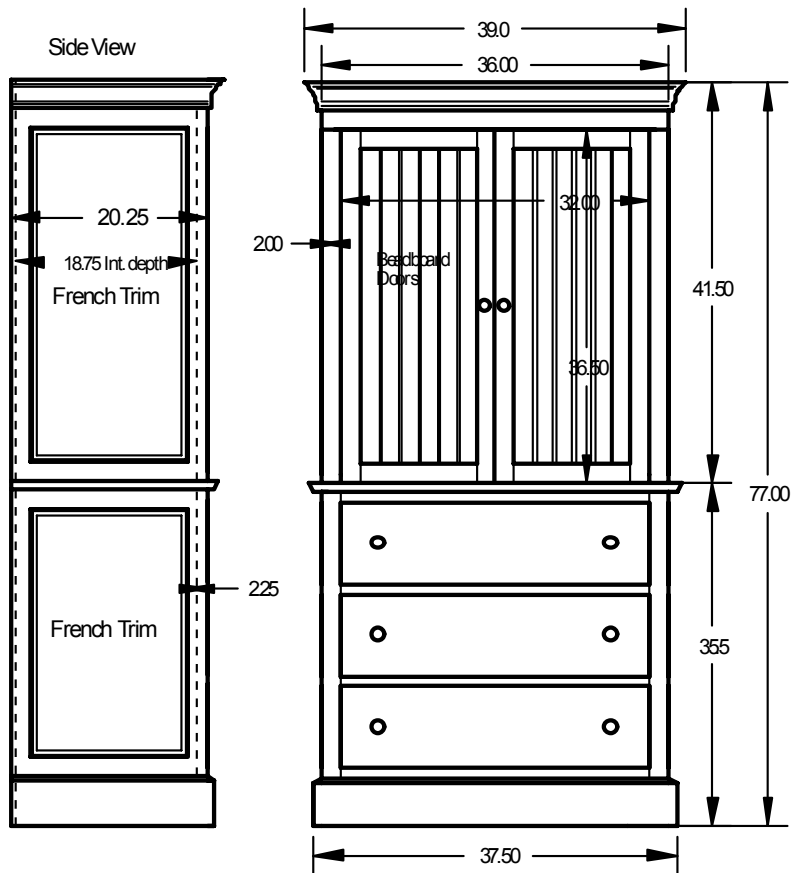
By Coastal  Woodcraft

Visit us at www.seabrookclassics.com
Example of custom CAD.
CAD drawings will be provided by request

CAD fees are \$50 per furniture piece, regardless of the number of revisions.

Revised # 1 Version: DRAFT	Custom CAD: 536 Plantation Linen Press For: Lester Tester Interiors, LLC	Page 1 of 1
-------------------------------	---	-------------

Item #536 Custom Linen Press



Approval Signature: _____ Date: _____

Signature indicates approval of drawings as shown. If changes are required, please note changes on drawing and fax back to 843-466-0288. If drawing meets expectations, please sign and fax back to same number.

Copyright Coastal Woodcraft, LLC makers of Seabrook Classics Furniture.
All rights reserved.



www.seabrookclassics.com
www.coastalwoodcraft.com

Phone: 843.466.0241 Fax: 843.466.0288

By Coastal Woodcraft

Door Options

-

Monograms

-

Finish Options

-

Color Options



www.seabrookclassics.com

www.coastalwoodcraft.com

Phone: 843.466.0241 Fax: 843.466.0288

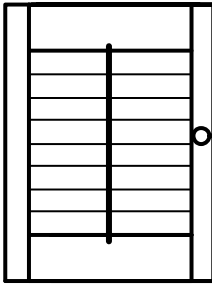
By Coastal  Woodcraft

Standard Door Options

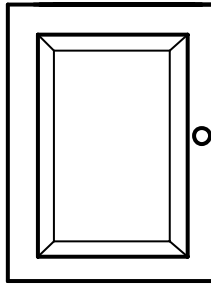
Coastal Woodcraft offers a variety of door styles to choose from. Bermuda, Plantation, and Seagrass doors, unless identified as standard, are charged as indicated.

Please specify your preferred door style when placing your order.

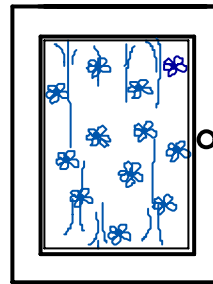
All single doors hinged on LEFT unless otherwise specified.



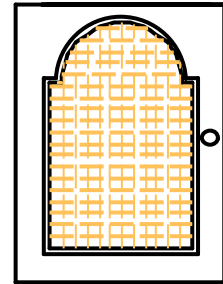
Plantation Shutter
(Functional)



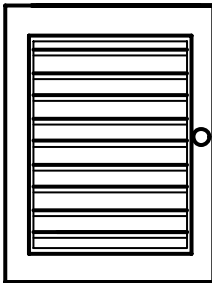
Raised Panel



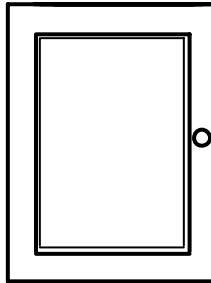
Open Panel with Dowel
Curtain Rods



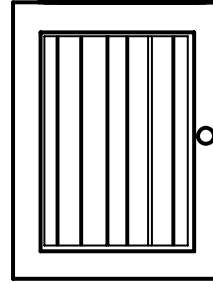
Arched Seagrass
(Squared Available)
\$25 / door



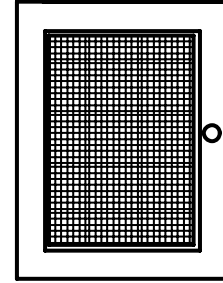
Bermuda Shutter
\$35 / door



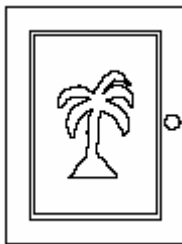
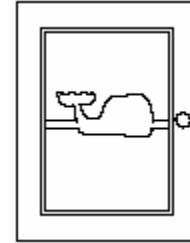
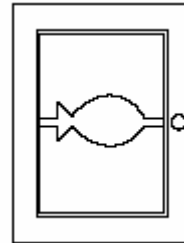
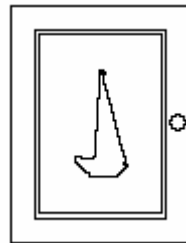
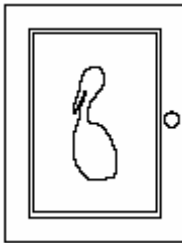
Flat Panel with Routed
Interior Edge



Squared Bead Board
(Arched Available)



Carolina Basket Weave



Door Cut-Outs

- Palm
- Pelican
- Sailboat
- Fish
- Whale



www.seabrookclassics.com
www.coastalwoodcraft.com

Phone: 843.466.0241 Fax: 843.466.0288

By Coastal Woodcraft

Monograms

Monograms are available on nearly all items. Our monograms are stenciled and hand painted, ensuring long lasting durability.

Select your font and style. Below are a few styles we have available. Please let us know if you would like a different style and we can send you a palette of your specific initials in different styles from which you may choose.



DIAMOND



SCRIPT



OVAL



VINE



OCTOGRAM

- Sizes will vary depending on item (up to 9 ")
- Designate style option and placement at time of order
- Provide the left, middle, and right letters for the initials
- All monograms available in any of our solid paint finishes



www.seabrookclassics.com

www.coastalwoodcraft.com

Phone: 843.466.0241 Fax: 843.466.0288

By Coastal Woodcraft

Seabrook Classics Finishes

Seabrook Classics furniture can be purchased with any one of our 5 finishes. All finishes are water born Sherwin Williams lacquer. They have proven to withstand the test of time and are remarkably durable and resilient.

Custom colors can be utilized; however, we cannot guarantee the finish of colors or paint finishes that are not part of our standard paint brand, or deviate from our standard finishes. Custom colors are charged at \$50/gallon.

Level I

A Level I finish is a single solid color chosen from our palette of over 40 colors. Each piece is sanded, primed, and then finished with multiple coats of the color of your choosing. All furniture is priced with a Level I finish.

Level II

Our Level II finish is known as a "Rubbed" finish. This is a proprietary method of finishing where a complimentary base color is chosen, and a top color is applied over the base color. We then "rub" the edges and details of the piece revealing the complimentary undercoat. *This method of finishing should not be confused with any other type of commercially available or defined "rubbed" finish.* Any color of our palette can be chosen as either the base or top coat, which leads to an infinite number of combinations! Level II finishes incur a 10% premium.

Level III

Similar to our "Rubbed" finish, but this level has three (3) colors applied and the edges are then rubbed revealing the 2 base coats. Level III finishes incur a 15% premium.

Level IV: Stain Grade Accents

Any piece can have a stain grade white pine or antique heart pine top surface added as an accent. Examples would be a painted buffet with a heart pine work surface or a table with a stained top.

Level V: Stain Grade Construction

Any of our pieces can be built in stain grade wood from white pine, antique heart pine, walnut, or cherry. Stain grade pieces are finished with a semi-gloss clear coat for preservation.

Notes about choosing your finish:

We have found when choosing a piece that will serve the hotel industry, be placed in a child's room, or be placed in an area of high use, the **Level II** finish has proven the most popular and satisfying to our clients.

Cottage style furniture is intended to weather over time revealing its own character. However, as the furniture wears, and paint is chipped away (as happens with all painted furniture), our proprietary rubbed finish provides the client an element of control with how the piece weathers.

All finished and painted pieces are shipped with a 3 ounce sample of paint.



www.seabrookclassics.com

www.coastalwoodcraft.com

Phone: 843.466.0241 Fax: 843.466.0288

By **Coastal**  **Woodcraft**

Visit us at www.seabrookclassics.com

Standard Color Palette of Seabrook Classics – Page 1 of 2

Colors do not reproduce well in print. Please refer to our paint chips before final choices are made. We can mail up to 3 paint chips free of charge to you or your client.



Bermuda

Hibiscus

Camelia

Flamingo



Sunset

Jambalaya

Fuzzy Peach

Coral Reef

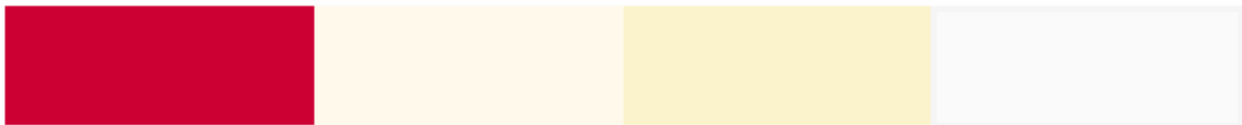


Lobster Pot

Seabrook Red

Burgundy

Brick Red



Gumbo

Antique White

Carolina Khaki

Oyster Roast



Victorian White

Sun Porch

Seabrook Yellow

Ricefield



Seabrook Black

Charleston Green

Billiard Green

Seabrook Green



Pale Green

Wetlands

Veranda

Sea Mist



www.seabrookclassics.com

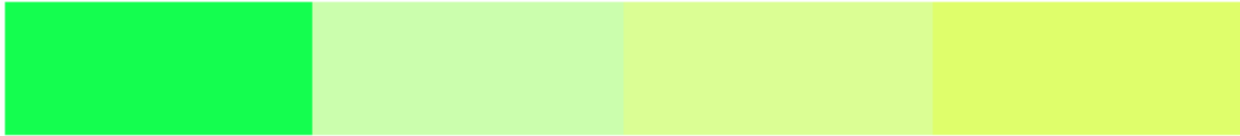
www.coastalwoodcraft.com

Phone: 843.466.0241 Fax: 843.466.0288

By **Coastal Woodcraft**

Standard Color Palette of Seabrook Classics – Page 2 of 2

Colors do not reproduce well in print. Please refer to our paint chips before final choices are made. We can mail up to 3 paint chips free of charge to you or your client.



Lily Green

Margarita

Palm

Lime Zinger

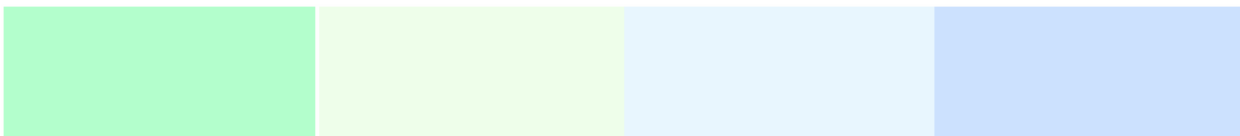


Mint Julip

Island Blue

St. Croix

Gullah Blue



Frogmore

Key Lime

Sailing

Beach



Bayside

Coastal

Regatta

Seabrook Blue



Wisteria



www.seabrookclassics.com

www.coastalwoodcraft.com

Phone: 843.466.0241 Fax: 843.466.0288

By Coastal Woodcraft

Level II Finish Examples

Colors do not reproduce well in print. Please refer to our paint chips before final choices are made. We can mail up to 3 paint chips free of charge to you or your client.

Below are just a few of the over 13,000 combinations that can be created. Please specify a "Light", "Medium", or "Heavy" rub at time of order.



Margarita over Hibiscus

Bayside over Victorian White

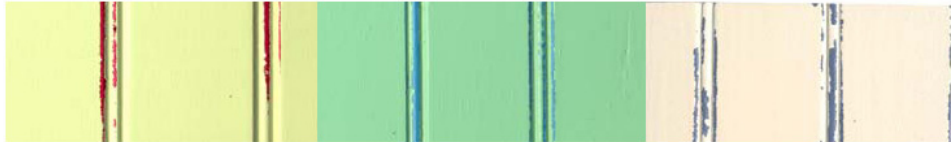
Gumbo over Natural



Regatta over Natural

Sunset over Ricefield

St. Croix over Oyster



Palm over Hibiscus

Frogmore over Bayside

Antique White over Seabrook Blue



Seabrook Black over Tan

Victorian White over Seabrook Blue

Beach over Oyster



Carolina Khaki over Brown

Bermuda over Sailing

Oyster over Frogmore



www.seabrookclassics.com

www.coastalwoodcraft.com

Phone: 843.466.0241 Fax: 843.466.0288

By Coastal Woodcraft

Level III Finish Examples

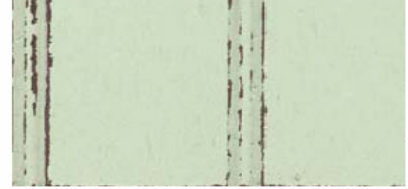
- Weathered White
- Seabrook Classics' Standard Multi-Color
- Shrimp n' Grits
- Create your own Multi Rubbed Finish: Select a top finish and two or three additional colors to show through as the rub.
- Create your own 2 color rubbed finish with an Antique Glaze: See example of Pale Green over Brown with an Antique Glaze



Seabrook Standard Multi-Color
(Antique White over Seabrook Green, Red, and Yellow)



Shrimp n' Grits
(Oyster over Sunset with an Antique Glaze)



Pale Green over Brown with Antique Glaze



Weathered White
(Victorian White over Brown, with an antique glaze)



www.seabrookclassics.com
www.coastalwoodcraft.com

Phone: 843.466.0241 Fax: 843.466.0288

By **Coastal Woodcraft**

Level IV: Stain Grade top (work surface) in White Pine.

Colors do not reproduce well in print. Please refer to our paint chips before final choices are made. We can mail up to 3 paint chips free of charge to you or your client.



Sealed Whitewash
on White Pine



Distressed Carolina Pine
(A warm finish with
characteristic dents and
scratches on White Pine)



Example of a Level IV finish on a
128 Farm Table
Top: Sealed English on White Pine



Dark English
on White Pine



Medium English
on White Pine



Sealed English
on White Pine

Please note: These samples were carefully selected to represent different types of finishes. If you desire CLEAR AND KNOT FREE woods, please contact us for a custom quote.



Example of Level 5 on a #217 Cabinet
Entire Item finished in Distressed
Carolina Pine

Level V: Stain Grade item in White Pine, Antique Heart Pine, Walnut, or Cherry



Seabrook Sealed
on Heart Pine



Seabrook Sealed on
Maple



Seabrook Sealed on
Cherry



Medium Dark on
Walnut

PLEASE NOTE: The above samples have been chosen carefully. No two trees are the same, and some variation in color will occur from tree to tree and with aging. We cannot guarantee an exact match. "Knot Free" must be specified at order.



www.seabrookclassics.com
www.coastalwoodcraft.com

Phone: 843.466.0241 Fax: 843.466.0288

By Coastal Woodcraft

Visit us at www.seabrookclassics.com

A Note About Wood Furniture and Cottage Style Furniture

The beauty of wood and most natural raw materials is that it isn't perfect. Wood can contain small knots, mineral streaks, irregular grain, small air cracks, small bug holes and other beauty marks. These are naturally occurring phenomena and are not considered defects.

Wood is hygroscopic which means that it is capable of easily absorbing and releasing moisture in relationship to the ambient air. In short, wood contracts and expands. When work is placed in high stress conditions such as direct sunlight, near a heating or air conditioning duct or in high moisture content environments such as a room with a Jacuzzi or water fountain, the odds are increased that the piece can warp and/or crack due to this expansion and contraction. So be kind to your wood furniture.

Cottage furniture is intended to wear and distress over time. It is this process that gives Cottage Style furniture its character. Our finishes provide a unique opportunity to control what your furniture will look like as the top coat gets nicked and scratched, revealing the under coating of the piece. We encourage you to explore various colors and undercoating colors to develop your own look and feel to your furniture. So above all, HAVE FUN with the colors!

Please review our policies and procedures before you buy. We will be happy to clarify any questions you have.

Our contact numbers are as follows:

Phone
843.466.0241

Fax
843.466.0288

Email
Info@seabrookclassics.com

Please Note:

Our furniture is individually built and finished by our craftsmen in our Sheldon, SC plant. All items ship from Sheldon, SC. Components of our furniture including some hinges, knobs, legs, and pedestals, and some of our chairs are purchased from third parties who may utilize sources for their inventory outside the U.S. Please contact us for any questions, or for detailed information about our third party sources.



www.seabrookclassics.com
www.coastalwoodcraft.com

Phone: 843.466.0241 Fax: 843.466.0288

By Coastal  Woodcraft