

Wall Units and Armoires

<u>Item</u>	<u>Page #</u>
Item # 114 Old Point Armoire	2
Item # W155 Broad River Wall Unit	2
Item # W131 Classic Bookcase Wall Unit	3
Item # W132 Three Piece Cottage Wall Unit	4
Item # W140 Lowcountry Wall Unit	5
Item # W145 High Tide Wall Unit	6
Item # W150 Brunswick Wall Unit	7
Item # W160 Sea Island Wall Unit	8
Item # W165 Maybank Wall Unit	9



www.seabrookclassics.com

www.coastalwoodcraft.com

Phone: 843.466.0241 Fax: 843.466.0288

By **Coastal**  **Woodcraft**



**Item # 114
Old Point Armoire**

- Two Piece Wall Unit
- Four Doors upper unit
- Large Center Compartment with Two Small Side
- Three Adjustable Shelves in each Small Side
- BASE:: Six Drawers
- 89H x 79W x 28D @ Crown
- Center Compartment: 44H x 40W x 25D

PHOTO

- Plantation Shutter Doors
- Brick Red over Antique White with Medium Rub

All Door Styles available, see Options.



**Item # W155
Broad River Wall Unit**

- Four Piece Wall Unit
- CENTER: Two Piece Center Unit
- Top: Doors
- Base: Three Drawers
- SIDES: Stepback
- Top: Three Adjustable Shelves
- Base: Three Drawers
- 96H x 84.5W x 24.75D @ Crown

PHOTO

- Bermuda Shutter Doors
- Victorian White exterior
- Gumbo Beadboard Backing

All Door Styles available, see Options.



www.seabrookclassics.com
www.coastalwoodcraft.com

Phone: 843.466.0241 Fax: 843.466.0288

By **Coastal**  **Woodcraft**

Item # W131
Classic Bookcase Wall Unit

- Three Piece Wall Unit

CENTER

- Top: Open
- Base: Doors

SIDES

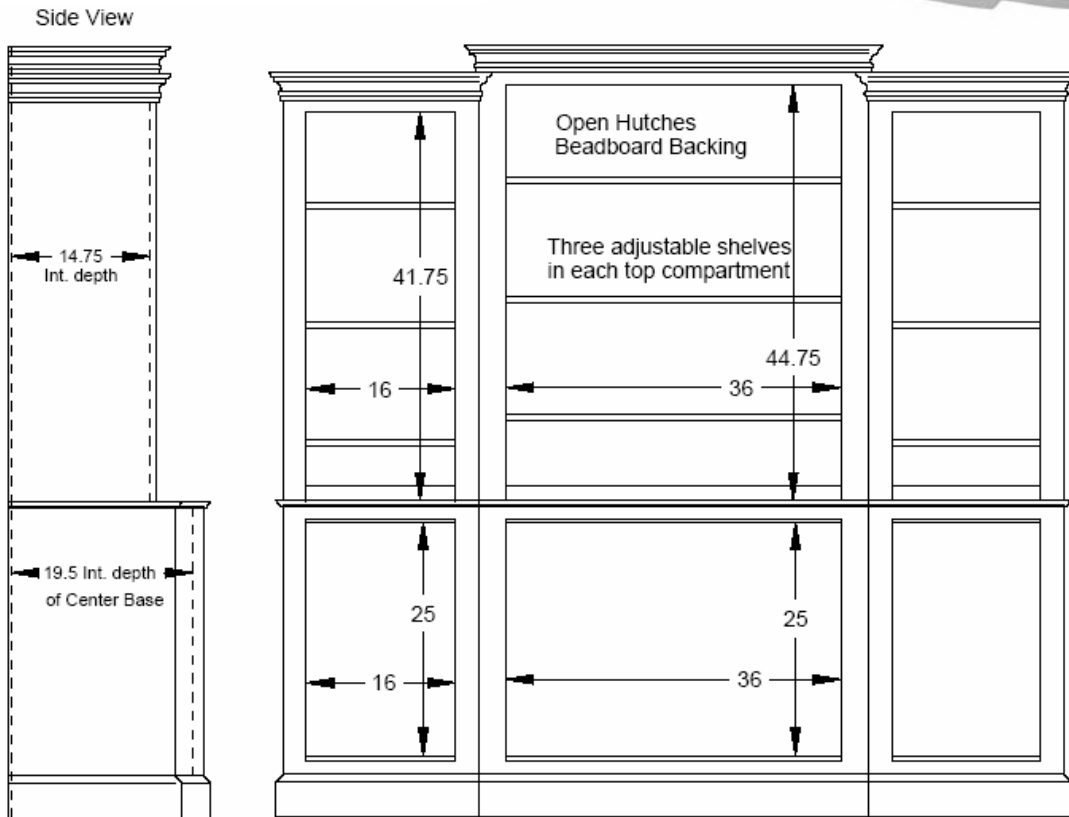
- Top: Open
- Three Adjustable Shelves each Side Unit
- Base: Doors
- Wrap around Crown
- Beadboard Backing
- 83H x 87W x 21.75D @ Crown
- Interior: See line drawing below

PHOTO

- Victorian White
- Plantation Shutter Doors



All Door Styles available, see Options.



www.seabrookclassics.com
www.coastalwoodcraft.com

Phone: 843.466.0241 Fax: 843.466.0288

By Coastal Woodcraft

Item # W132
Three Piece Cottage Wall Unit

CENTER

- Top: Doors
- Base: Doors

SIDES

- Top: Open
- Three Adjustable Shelves
- Base: Doors
- Crown Molding
- Beadboard Backing
- 96H x 12.5W x 25D @ Crown
- Interior: See line drawing below

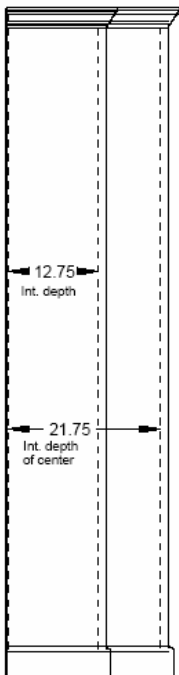
PHOTO

- Antique White
- Bermuda Shutter Doors
- Raised Panel Doors

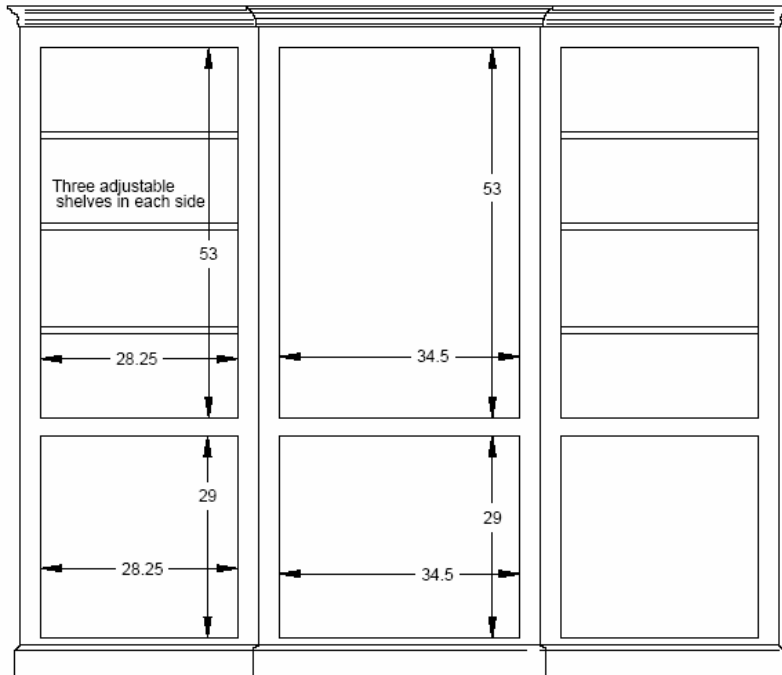
*All Door Styles available,
see Options.*



Side View



Interior View



www.seabrookclassics.com
www.coastalwoodcraft.com

Phone: 843.466.0241 Fax: 843.466.0288

By Coastal Woodcraft

Item # W140

Lowcountry Wall Unit

- Four Piece Wall Unit

CENTER: Two Piece

- Top: Doors
- Base: Doors

SIDES

- Top: Open
- Three Adjustable Shelves
- Base: Doors
- Beadboard Backing
- 80H x 102.5W x 25.5D@ Crown

Interior:

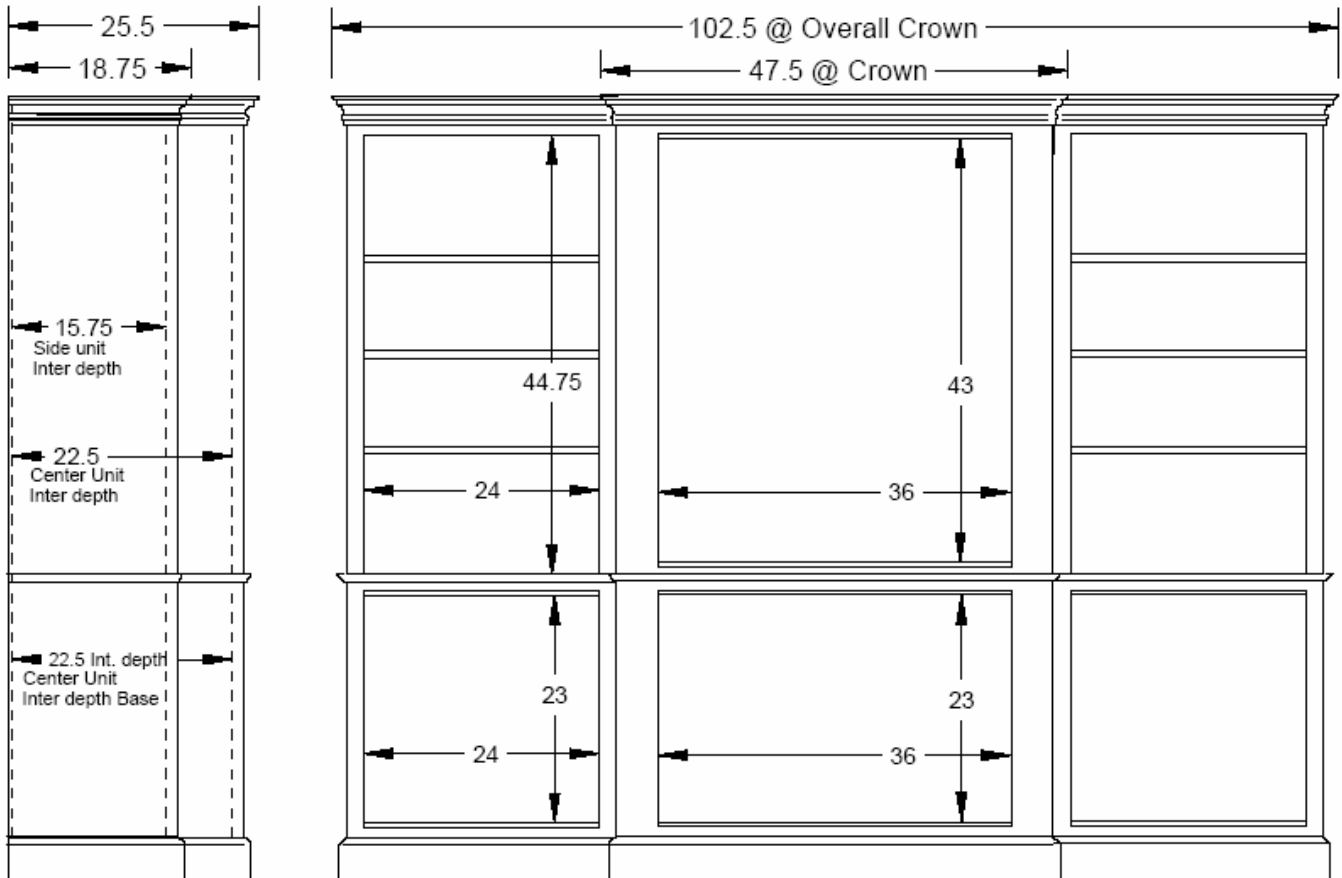
See line drawing below

PHOTO

- Seabrook Black
- Plantation Shutter Doors



All Door Styles available.



www.seabrookclassics.com
www.coastalwoodcraft.com

Phone: 843.466.0241 Fax: 843.466.0288

By **Coastal**  **Woodcraft**



Item # W145
High Tide Wall Unit

Accommodates Wide Screen Televisions

- Three Piece Wall Unit

CENTER

- Bi-Fold Doors



SIDES

- Open Hutch
- 2 Adjustable Shelves
- One Door
- Fixed Interior Split Shelf @ Top for DVD, VCR, etc
- 5.75H x 23.5 W x 20.5D
- 75H x 105.5W x 23.5D @ Crown
- Interior Center Compartment: 64H x 48W x 20.5D
- Interior Center below Split Shelf: 57H

PHOTO

- Victorian White with Veranda Green Bead-board Back
- Plantation Shutter Doors

All Door Styles available, see Options



www.seabrookclassics.com

www.coastalwoodcraft.com

Phone: 843.466.0241 Fax: 843.466.0288

By Coastal Woodcraft

Item # W150

Brunswick Wall Unit

- Four Piece Wall Unit

CENTER: Two Pieces

- Top: Two Bi-Fold Doors
- Base: Four Doors

SIDES

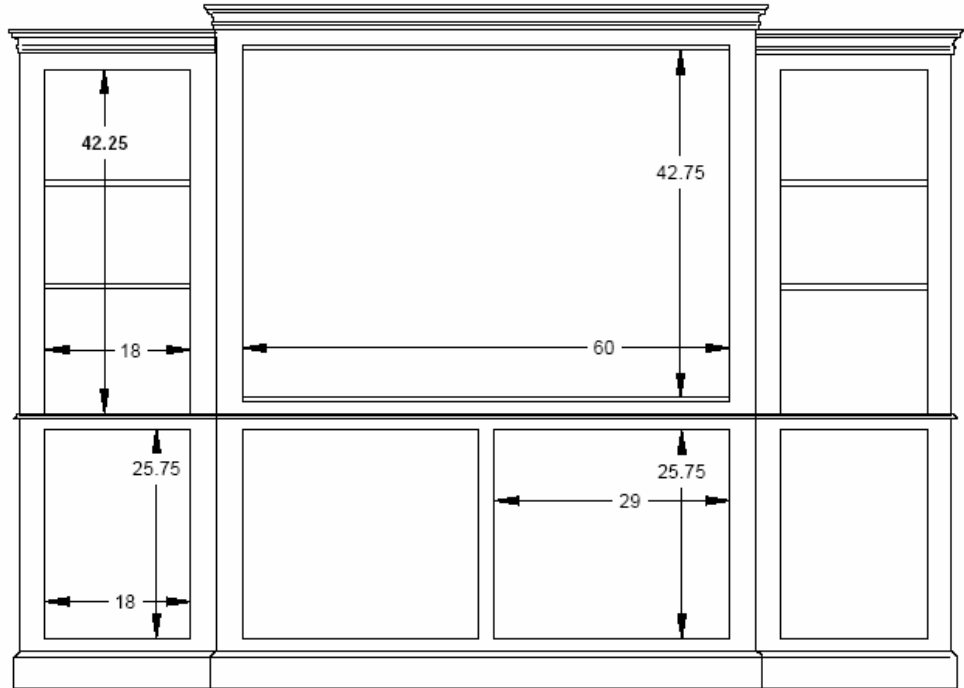
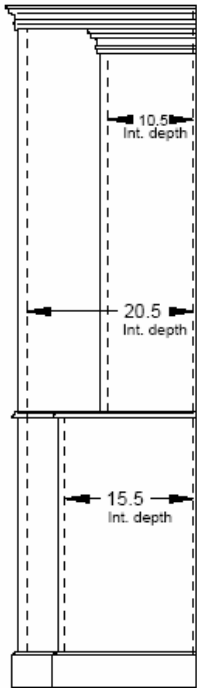
- Top: Two Adjustable Shelves
- Base: One Door each Side
- 84H x 17.5W x 23.5D @ Crown
- Interior: See line drawing below

PHOTO

- Victorian White
- Bermuda Shutter Doors



*All Door Styles available,
see Options*



www.seabrookclassics.com
www.coastalwoodcraft.com

Phone: 843.466.0241 Fax: 843.466.0288

By Coastal Woodcraft

Item # W160
Sea Island Wall Unit

- Four Piece Wall Unit

CENTER:

- Two Piece Center Unit
- Top: Doors
- Base: Doors

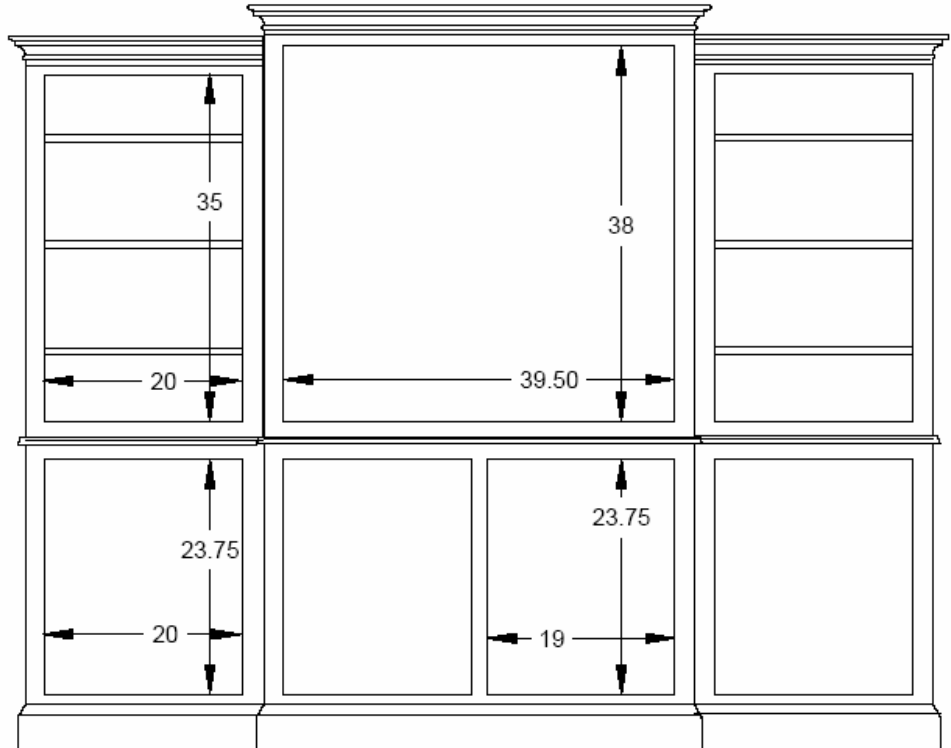
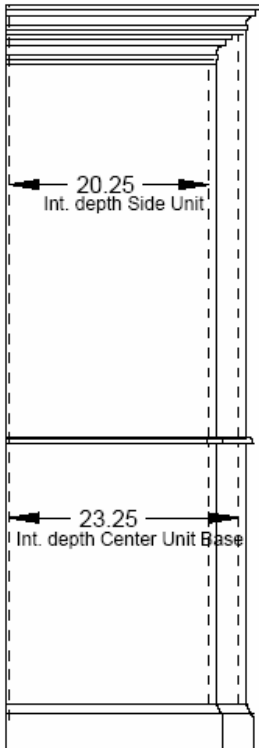
SIDES

- Top: Open
- Three Adjustable Shelves
- Base: Door
- Beadboard Backing
- 75H x 94.5W x 25.75D @ Crown
- Interior: See line drawing below

PHOTO

- Seabrook Black over Natural
- Raised Panel Doors

All Door Styles available, see Options



www.seabrookclassics.com
www.coastalwoodcraft.com

Phone: 843.466.0241 Fax: 843.466.0288

By Coastal Woodcraft



Item # W165
Maybank Wall Unit

PHOTO

- Victorian White over Brown
- Shown with Basket Weave Doors



Item # W165
Maybank Wall Unit

Accommodates many Wide Screen Televisions

- 2 Piece Wall Unit
- Hutch has Bi-Fold Doors
- Opened Center is 37.5H x 48W x 13D above Fixed Shelf and Cubicles
- 73H x 7W x 16.5D @ Hutch Crown (78.5D x 20.25D @ Base Top)

Other Door Options available



www.seabrookclassics.com
www.coastalwoodcraft.com

Phone: 843.466.0241 Fax: 843.466.0288

By **Coastal**  **Woodcraft**

Visit us at www.seabrookclassics.com



by Coastal  Woodcraft

Orders or Inquiries
843.466.0241

Fax
843.466.0288

Email
Info@seabrookclassics.com



www.seabrookclassics.com
www.coastalwoodcraft.com

Phone: 843.466.0241 Fax: 843.466.0288

By Coastal  Woodcraft